



# CATAMARAN BUOY

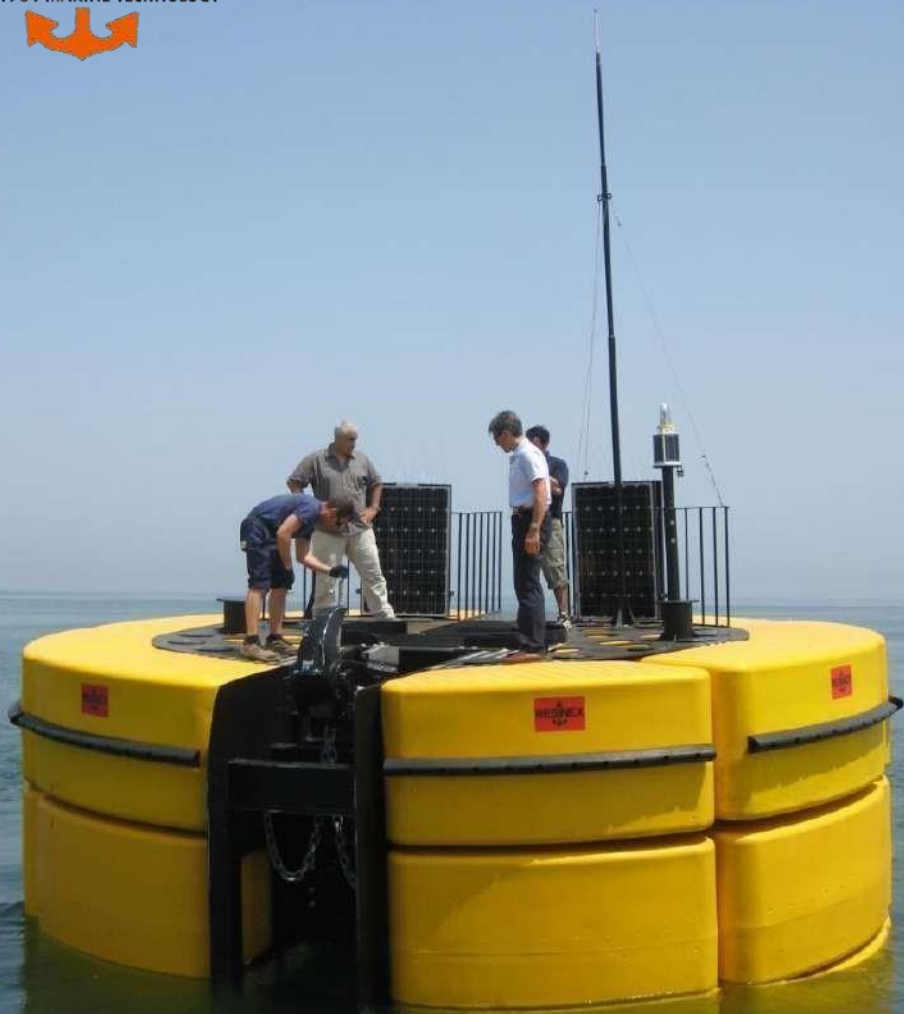


## What is a catamaran buoy?

- ▶ It is a mooring buoy, patented by Resinex at the end of 80', designed with a unique leverage system (**Multi-Lever System**) in order to balance the ship mooring tension so that the buoy maintains the horizontal position, also under the worst working condition.
- ▶ **The system, during the years, has evolved in terms of materials and engineering solutions that has always increased more the product safety and the quality.**

## Which are the advantages compared to the traditional mooring buoys?

- ▶ It guarantees the maximum safety for the operators and in the case of emergency
- ▶ The entire system avoids that the buoy, in mooring condition, presents strong oscillations that caused a risk for the people's and ship safety



- ▶ Modularity
- ▶ Multi-Lever System
- ▶ Stability and safety



**Modularity**



# Multi-Lever System



**Stability and Safety**



Malaysia 2005

Diameter: 5.8 m

Height : 2 m

SWL: 75 t



Italy 2008

Diameter: 5.8 m

Height: 3 m

SWL: 250 t



Cameroun 2008

Diameter: 4.3 m

Height: 2.2 m

SWL: 90 t



Albania 2008

Diameter: 4.3 m

Height : 1.1 m

SWL: 60 t



Venezuela 2008

Diameter: 4.3 m

Height : 2.2 m

SWL: 75 t



Italy 2009

Diameter: 5.8 m

Height : 2.2 m

SWL: 300 t



Italy 2009

Diameter: 5.8 m

Height : 2.2 m

SWL: 300 t



Malaysia 2009

Refurbishment of the previous buoys



Venezuela 2010

Diameter: 4.3 m

Height : 2.2 m

SWL: 75 t



Tenerife 2010

Diameter: 5 m

Height : 2.2 m

SWL: 150 t



Italy 2010

Diameter: 4.3 m

Height : 1.1 m

SWL: 50 t



Malaysia 2012

Diameter: 5.8 m

Height : 2.5 m

SWL: 75 t



Malaysia 2014

Diameter: 5.8 m

Height : 2.5 m

SWL: 75 t



Angola 2015

Diameter: 5.8 m

Height : 2 m

SWL: 120 t





Italy 2016

Diameter: 4.3 m

Height : 1.1 m

SWL: 80 t



Egypt 2017

Diameter: 5.0 m

Height : 2.2 m

SWL: 180 t



Panama 2018

Diameter: 5.8 m

Height : 2 m

SWL: 275 t



Panama 2018

Diameter: 5.8 m

Height : 2 m

SWL: 275 t



DJI\_0001



**Panama 2018**

**Diameter: 5.8 m**

**Height : 2 m**

**SWL: 275 t**



Egypt 2021

Diameter: 6.0 m

Height : 2.2 m

SWL: 90 t



Egypt 2021

Diameter: 6.0 m

Height : 2.2 m

SWL: 90 t



Colombia 2022

Diameter: 5.8 m

Height : 3.3 m

SWL: 300 t



Colombia 2022

Diameter: 5.8 m  
Height : 3.3 m  
SWL: 300 t



Curacao 2023

Diameter: 5.8 m  
Height : 3.3 m  
SWL: 400 t



**CURACAO 2023**

**Diameter: 5.8 m**

**Height : 3.3 m**

**SWL: 400 t**

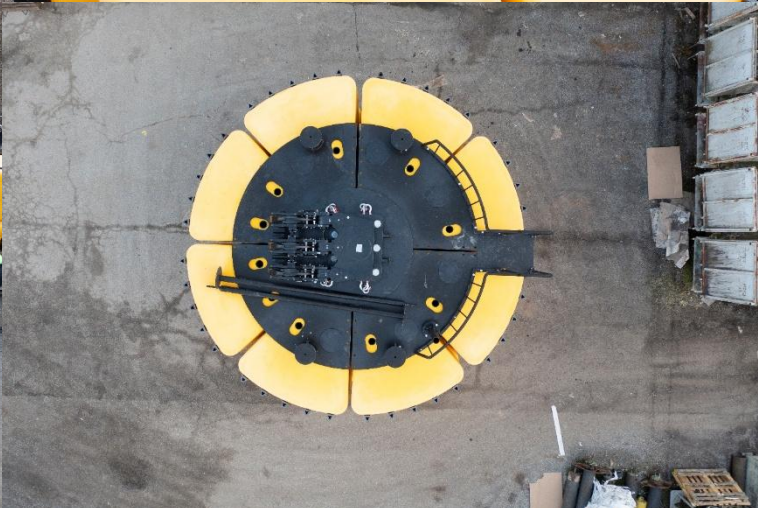


Romania 2024

Diameter: 5.8 m

Height : 1.2 m

SWL: 150 t



Thailand 2024

Diameter: 6,6 m

Buoyancy: 61 t

SWL: 275 t